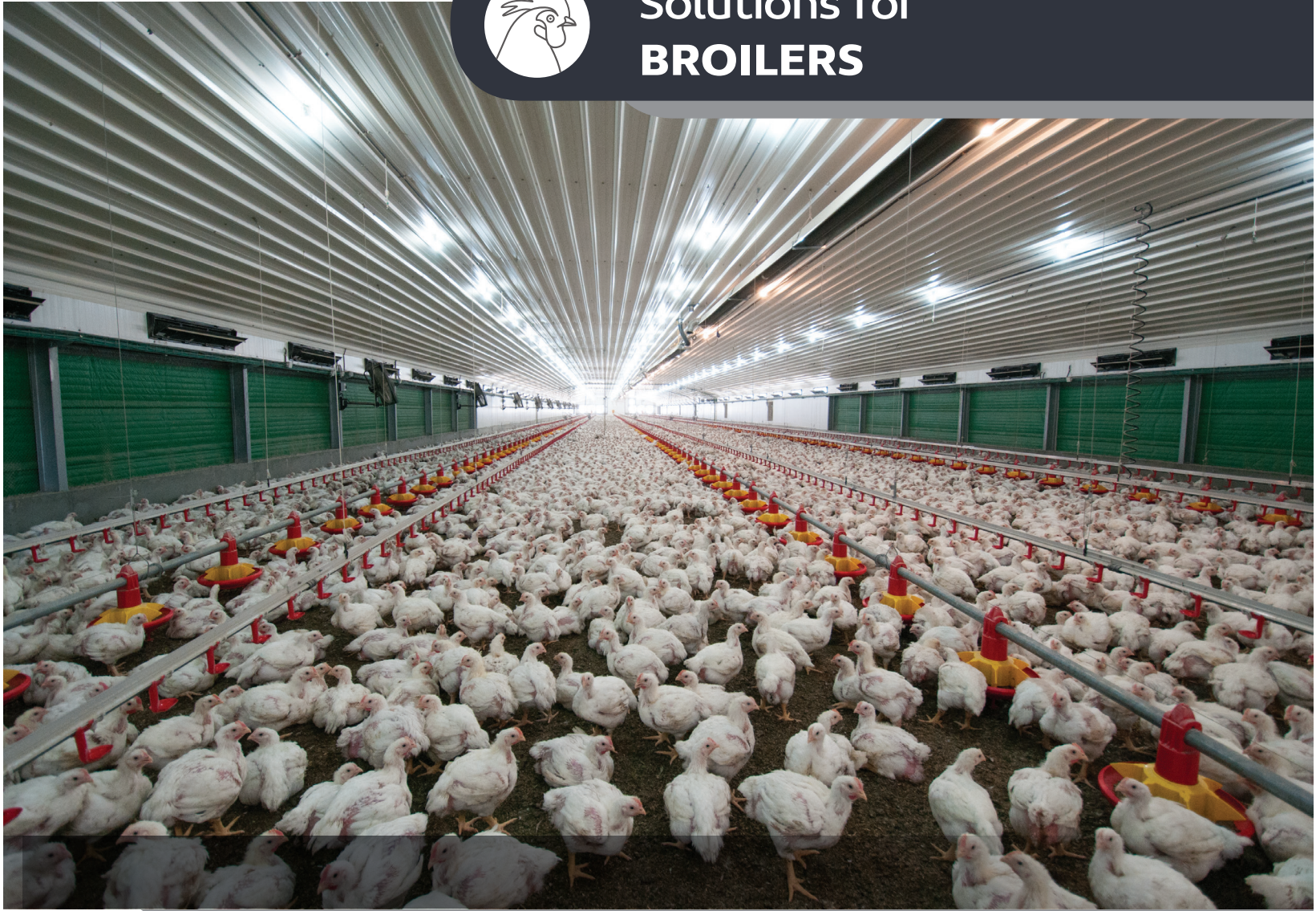




Solutions for **BROILERS**



Global Presence - Local Commitment



Feeding



Drinking

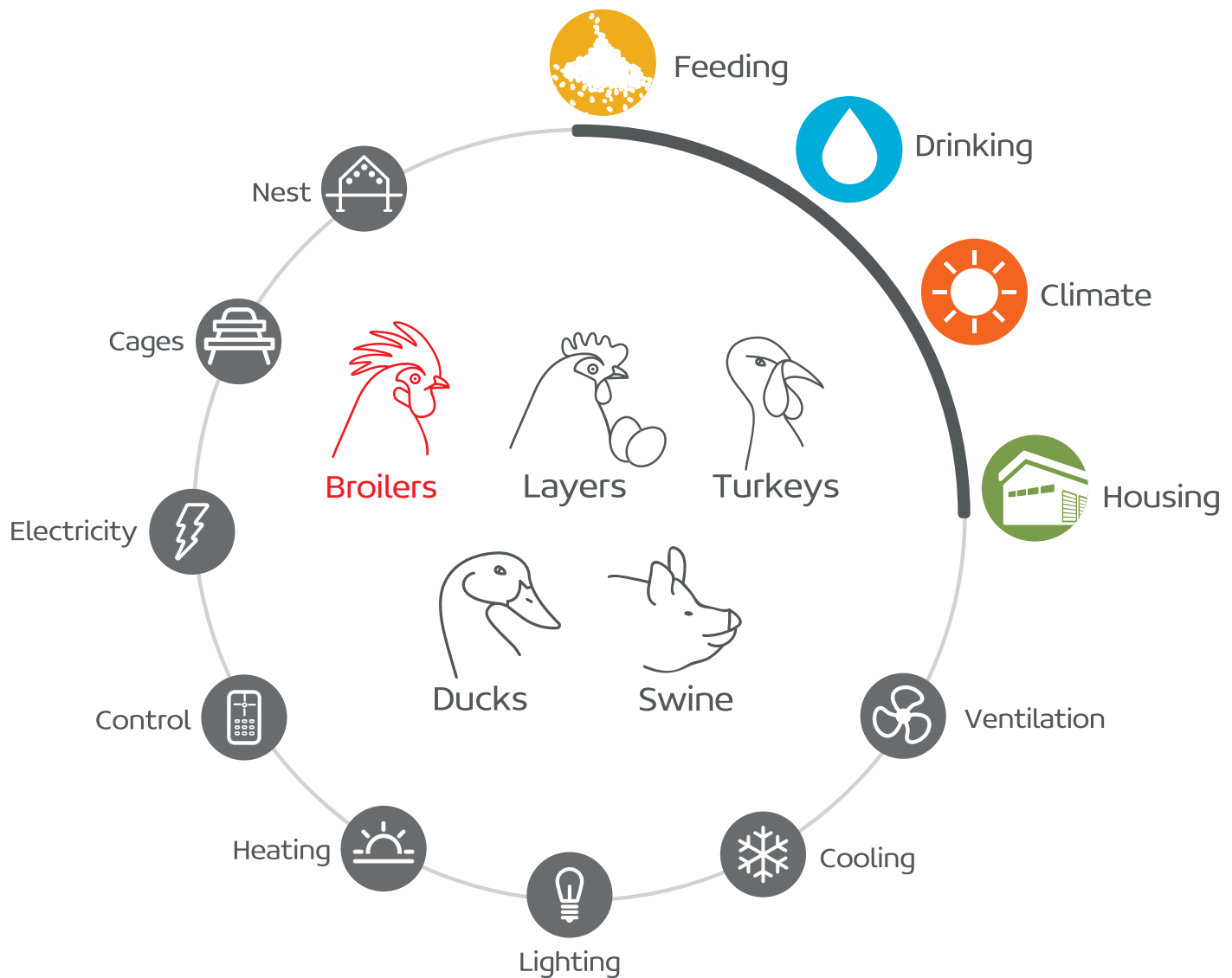


Climate



Housing

Complete Broiler Packages



PLASSON is aware that the main goal in Broiler production is to achieve the highest possible yield of broilers meat per time and floor space. Reaching this while keeping the main expenses under a well-controlled regime within animal welfare regulations will usually lead to the best economic bottom line. We believe that there is more than one winning concept and that the design must take into account the genetic line, market culture, grower skills and climate as major criteria while planning the package. The main variables we consider when planning the solution are:

- Floor space per bird
- Marketing weight
- House type
- Ventilation type
- Feed formulation and textures
- Water quality

Working with PLASSON will enable you both the know-how and the equipment to develop the most efficient solution backed by PLASSON field support and continuous innovation.

Feeding



Recommendation

PLASSON non grill pan does not need to be raised before day 18-21 and yet no feed waste will be caused



PLASSON offers pan feeding system for better FCR at all given ranges of bird marketing weights.

Grillless Pan

Features:

- Less feed waste by innovative design
- Better accessibility for the birds at all ages
- Easy to adjust quantity of feed in the pan
- High quality materials result in extended durability
- Options of automatic flooding & built in shut-off



Grilled Pan

Features:

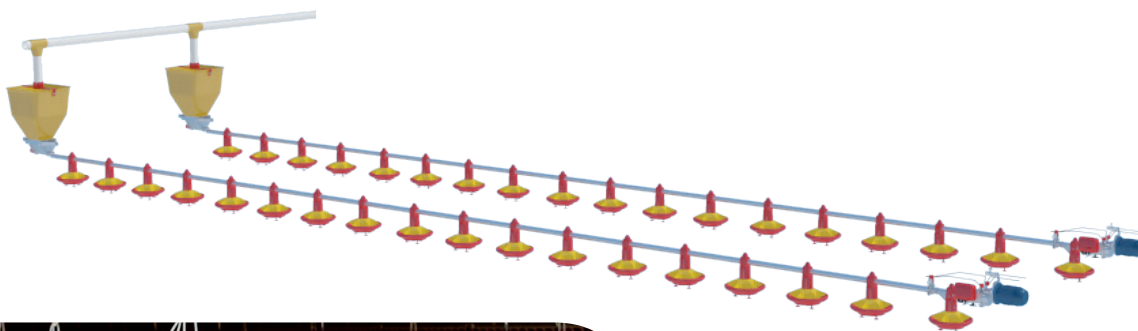
- Suitable for higher marketing weights
- Highly durable quality plastic
- Easy cleaning and sanitizing
- Uniform feed distribution with adjustable amount of feed in the pan



Feed Distribution Lines

PLASSON offers auger distribution lines with unique features:

- Hopper made of highly resistant Plastic & SS boot for easy maintenance and lifelong use
- Dia. 44.5mm Galvanized tubes 1.2mm wall thickness, spacing options 1m/0.75m/0.69m
- Two options for brooding - 'Easy Drop' - Stand alone shut-off (with or without manual feeder) or 'Chick Start' spout
- Intermediate control pan for flexible part house brooding and/or growing area restriction
- Control pan built on standard pan with micro switch or proximity sensor options for reliable operation
- Reliable and easy to handle suspension systems with options of cord/cable and manual / motorized winches



Silo, Feed Weighing & Fill Lines

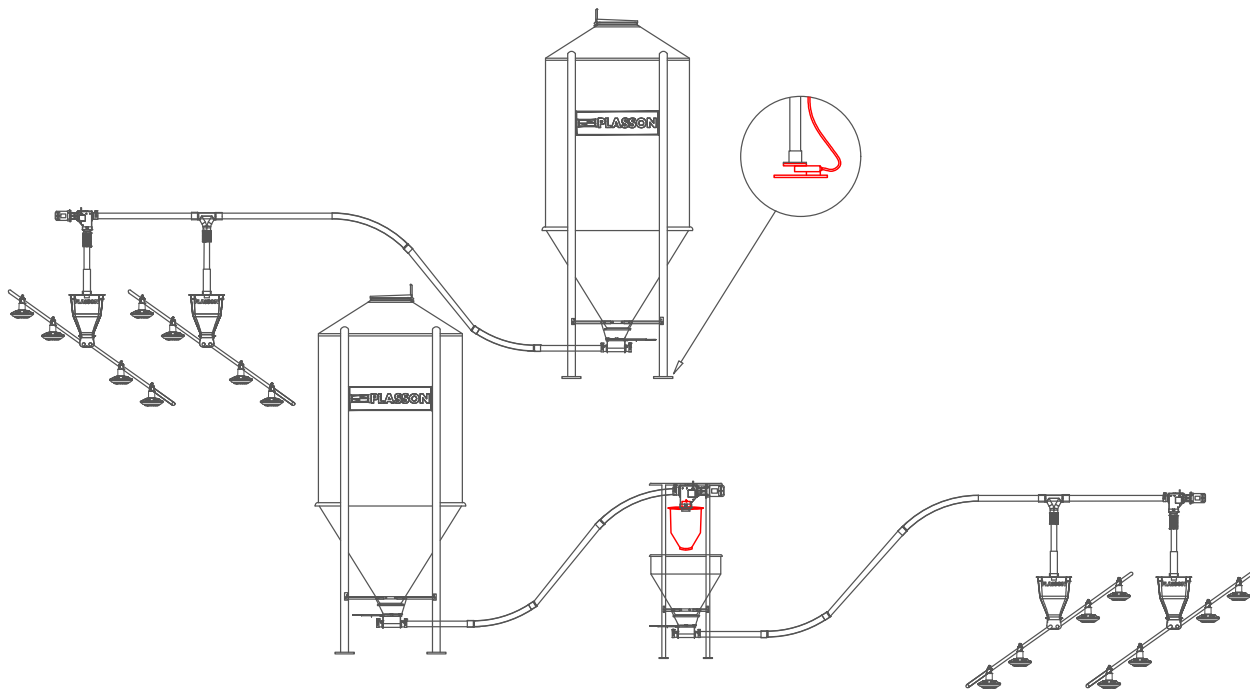
PLASSON systems for storage silos are designed to enable feed storage and supply in the most appropriate way. The system also includes, fill (conveying) lines and weighing, inventory monitoring and ensures simple-smooth operation .

Feed Storage Silos

A wide range of silos, pneumatically filled or top. Storage capacity ranges from 3 to 35 tons per silo.

Features:

- Made of galvanized corrugated steel or fiberglass
- Ladder and safety cage included in all models
- Offered in a variety of specifications- capacity, diameter, height, number of legs
- Manual feed drop and sight window(s) as options
- Option of weighing the silos with leg load cells
- Option of distance filling (over the fence)



Feed Fill Lines

PLASSON offers filling the distribution line hoppers by PVC tubed auger lines.

Features:

- Range of diameters 55-100 mm to meet all relevant capacities (standard is 90mm)
- Boot enables 0-30o outlet, 1-4 lines
- Built in safety switches and blocking prevention
- Unique automation control on operation by each distribution line prevent empty lines

PLASSON unique Tee drop enables feed flow easier than any other model

Drinking



Recommendation

Placing the nipple lines in 'groups', 1 meter on each side of the feed lines gives better results than intermittent spacing with feed lines



PLASSON offers Nipple Drinking System with highly efficient applications of Water Management Systems:

Nipple System

PLASSON well proved range of Nipples cover all the spectrum of flow rates required for broilers in hot/ cold climates and various management practices.

Features:

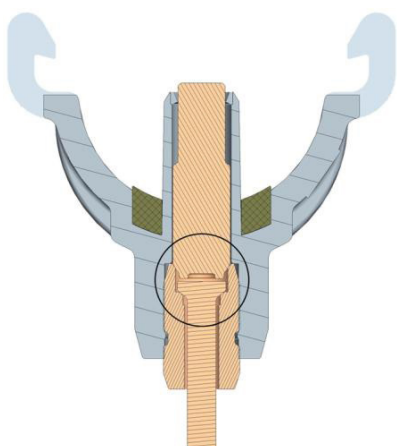
- PLASSON'S Nipple Systems ensures sufficient water supply at peak consumption times while keeping floors dry
- Easy side action for broiler nipples improves chicks mortality
- Available combinations and add-ons of partial plugging, auto flushing, controlled pressure regulation (WOD) and slope regulation
- Tray for nipple is optional
- Reliable suspension systems with manual or motorized winches

Every Nipple - Tried and tested for quality

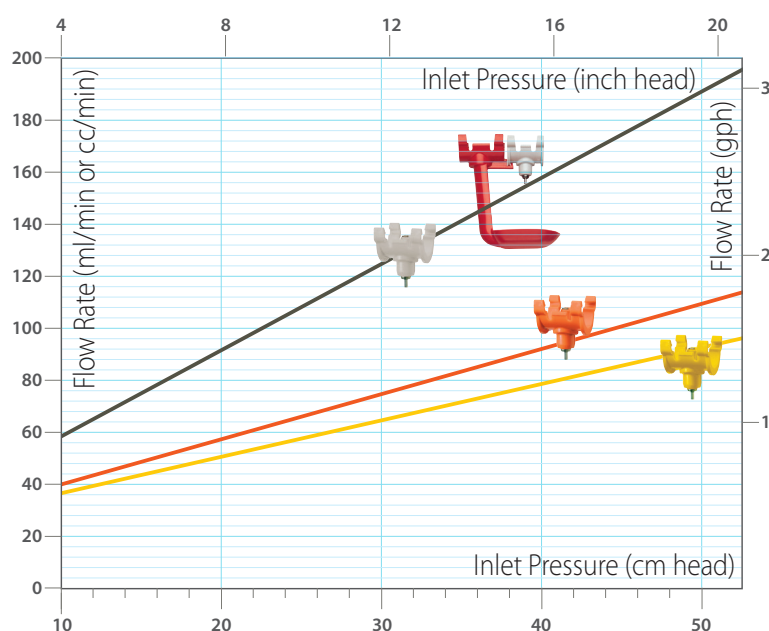
PLASSON is known worldwide as a leader in quality systems. Every Nipple leaving PLASSON manufacturing facility undergoes quality testing.

Double Sealing

Two sealing points ensure dry litter.



Flow Rate vs. Inlet Pressure



Bell Drinkers

PLASSON'S well known Bell Drinkers are in some places still the preferred option for drinking.

Features:

- Reliable life-long products
- Unique ballast bottle, independent of the bell
- Flexibility to position out of line
- Individual height adjustment with optional central lifting



Recommendation

Recommended number of Drinkers per 1000 adult birds: 8-10

Water Management Systems

PLASSON provides Water Management applications.

Features:

- Filters for improving conditions
- Water meters with electronic output that can read even the first day consumption
- Chemicals and medicine dosing
- Water hardness treatment - Siliphos
- Pressure regulation including pressure boosting
- Emergency water storage

Recommendation

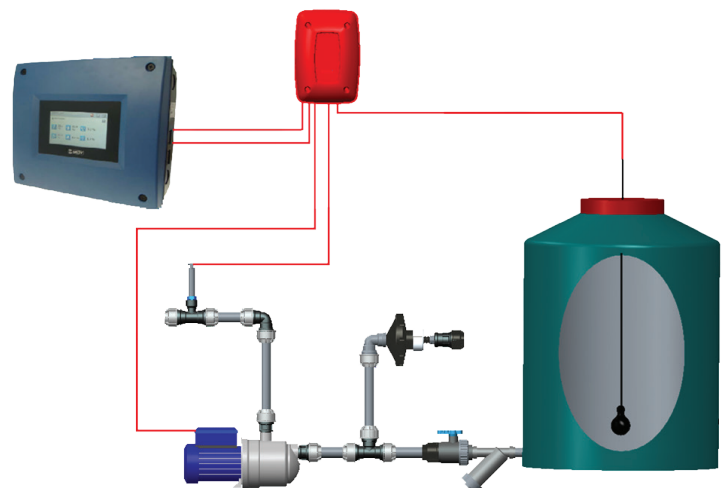
Morning flow rate requirement (during feed time) is 3-4 times higher than the daily average.

Water on Demand (WOD) PRO

Features:

- A revolutionary (patented) solution for optimal water management
- Controls and manages the water pressure in all drinking lines from one central point
- Enables presetting of the pressures for the entire grow-out
- Maximizes bird performance with optional water supply
- Enables increasing of water pressure for peak consumption

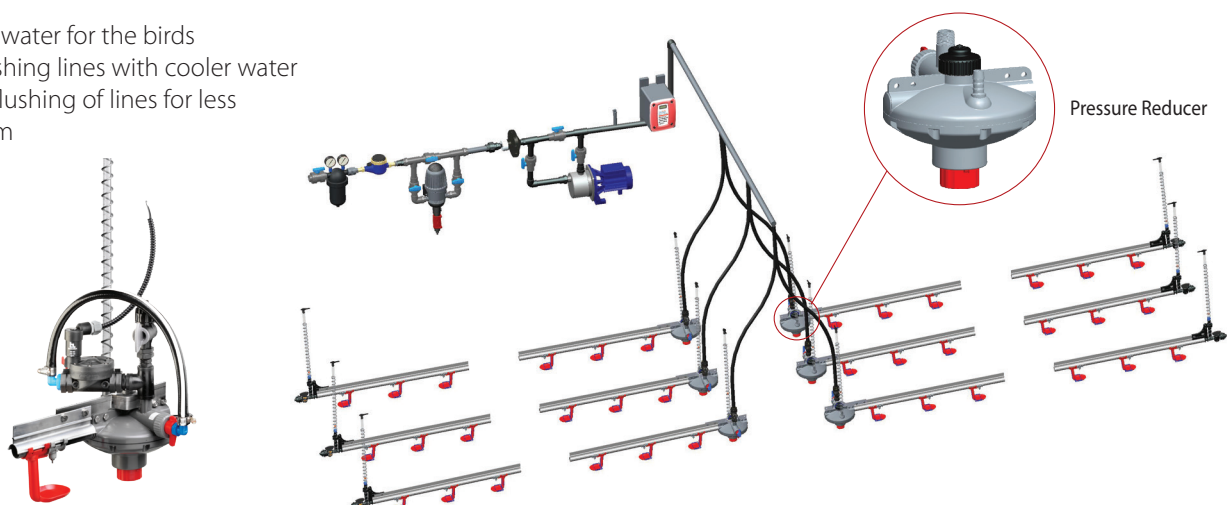
Water on Demand PRO
Precise Day Round Water Consumption



Automatic Flushing of Nipple Lines

Enables:

- Fresh water for the birds
- Refreshing lines with cooler water
- Easy flushing of lines for less biofilm



Climate



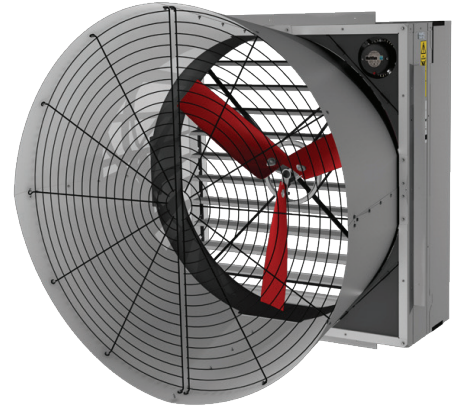
Ventilation



Exhaust Fans

Proven performance in the field guarantees ventilation system reliability

- Available in stainless steel, galvanized and fiberglass
- Assurance of optimum performance and low power consumption
- Automatic tensioning on belt fans
- Available in 1 HP and 1.5 HP versions
- Butterfly or frontal shutters
- Available with or without cone
- Available in belt and direct drive version
- Available in 24", 36", 50" and 52"-54"
- Excellent results on BESS labs tests.



Circulation Fans

- With safety guards
- Various suspension solutions

Inlets

Wall Inlet

- Aerodynamic wing improving airflow and throw on minimum ventilation
- Air quality and temperature uniformity is ensured throughout the flock regardless of the external climate
- Available in few lengths for supplying from 1500 up to 5000 m³/h
- Wide range of opening system configurations



Ceiling Inlet

- Utilization of heated attic air
- Especially for wide houses
- Ceiling inlet available in two models: simple and double

Cooling Pad



Provide maximum comfort for your birds by using PLASSON evaporative cooling system

- Adjustable flow control to maximize cooling and minimize water spillage
- Frames constructed from stainless steel, aluminum or PVC
- PLASSON robust design ensures that the system is highly durable and requires minimum maintenance
- Opening systems available: Curtain / Tunnel Door

Cellulose Cooling Pad

- The pad's design, along with the quality of paper ensures better water absorption and promotes excellent cooling with less air-restriction at the house entrance
- 150x600x1800mm cellulose board with external protection
- Algae protection system



Fogging

High / Low Pressure Fogger System

- 500PSI - 70PSI
- Highly resistant fogger nozzles
- Anti-drip system
- Filtering system for preventing clogging



Heating



Radiant Tubes

- Optimum radiant efficiency
- Allows great fuel savings by heating only the relevant surfaces
- One- and two-stage heaters available
- Specially developed for livestock barns
- Available in 9-12m and 100,000-150,000 BTU
- Including complete suspension installation and air inlet sets



Space Heaters

- All energy from gas burning stays in the barns
- Available with indoor or outdoor mounting kit
- Various safety features preventing gas leaks and excessive pressure
- Robust and reliable consumption



Brooders

- Anti corrosive materials
- Controlled by electronic ignition or pilot flame
- Available from 5 to 12 KW/h
- Control panel with thermostat or solenoid valve



Recommendation:

Aim for 30 lux at bird eye with warm light. Dimming is required for DOC placing and for easier marketing



Lighting



PLASSON LED system includes:

- Dimmer
- Lighting Garland Lines
- LED Bulbs

IGBT Dimmer

Features:

- Works as a stand-alone controller or as a slave to a climate controller or in manual mode
- Up to 1000W X 2 in two independent programmable channels
- Built-in protections - surge, short-circuit, overload, overheat
- Excellent power factor and efficiency
- Extends bulb life (higher light intensity maintained)



Lighting Garland

Features:

- Easy installation and operation
- 100% waterproof (IP67) casted sockets
- Available in different lengths and bulb spacing



LED Bulbs

Features:

- Available in 6, 9 and 16.5W models
- Broad beam angle (no spotting, excellent distribution)
- IP-67 protection when assembled in the designated garland
- Long life expectancy (25,000 - 35,000 hours)



* For further information about PLASSON Climate Solutions, refer to the PLASSON'S 'Climate Solutions' catalogue



Controller



A full line of controllers to fit the needs of modern livestock houses.

- Easy and quick access to the menu settings
- Excellent information display screen
- Controllers with up to 40 relays
- Up to 30 levels of scheduled ventilation ensure less abrupt changes and lower energy consumption
- Minimum ventilation according to the bird's weight
- Air quality control via a CO₂ and humidity sensors
- Safety system (backup) integrated into the controller
- Option of storing programming on a memory card
- History of temperature, humidity, alarm and power failure records
- Temperature programming by curve or by desired temperature
- Capacity for up to 18 temperature sensors
- Commands for up to 20 ventilation groups
- Possibility of 8 independent cooling systems
- Controls up to 6 independent heating zones
- Automatic flushing control for nipple system
- Curtain inlet opening controlled by percentage or by static pressure
- Option of including passwords for changing setting
- Scale control for birds and feed silos, dimmer and electronic water meter
- Detailed records of alarms and events
- Communication with PC via USB cable for viewing, setting and collecting controller data
- Bird thermal sensation display





Weighing

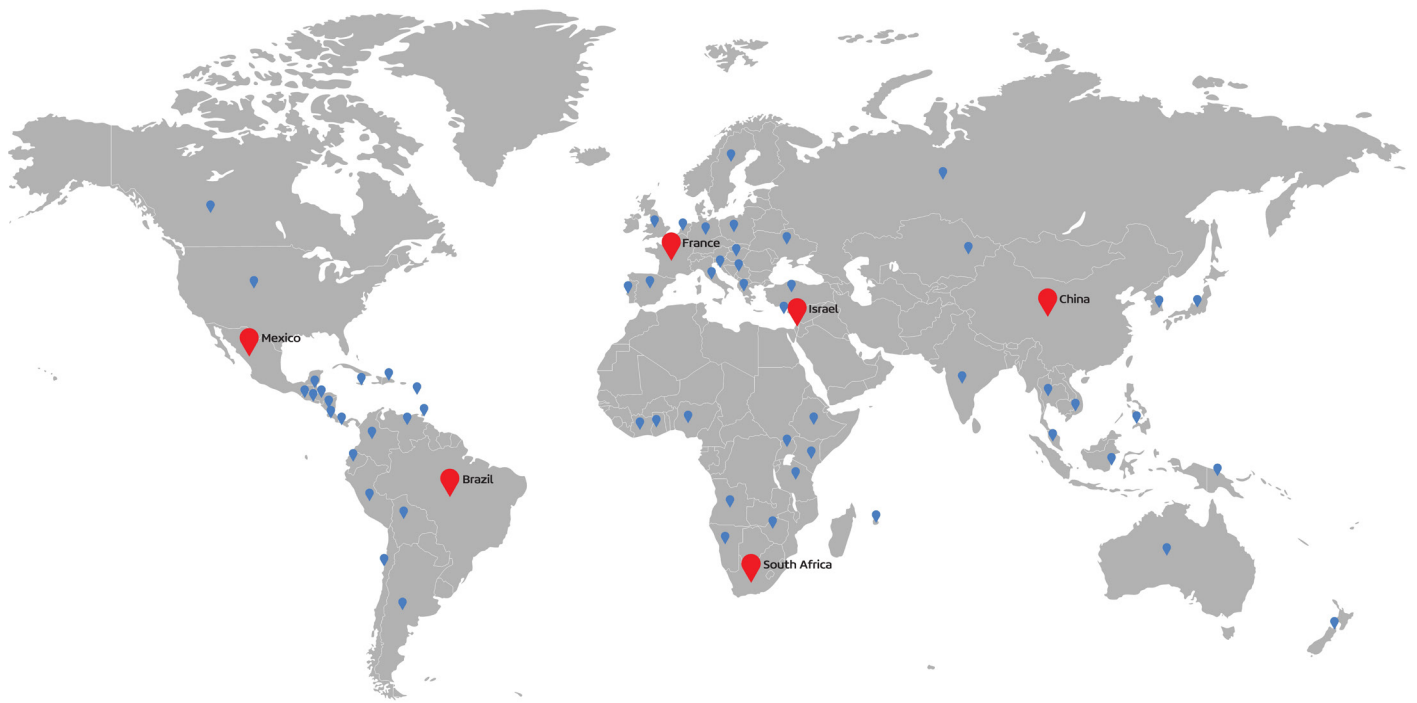
Weighing Silo

- System based on load cells under the silo's legs
- Control of up to two independent silos with the same control unit
- Automatic registration of feed loads received at the house
- Information about the daily feed intake and feed level

Bird Scales

- Record of daily weighing figures
- Information about daily weight gain
- Automatic calculation of the birds' average weight
- Made of anti corrosive material
- Available in suspended and platform models
- Up to 500 days of data logging
- Ability to work with up to two independent scales per controller





Global Presence – Local Commitment



Feeding



Drinking



Climate



Housing

Maagan Michael, D.N. Menashe, 3780500, Israel | Tel: +972-73-2413001, Fax: +972-73-2333711
info@plassonlivestock.com | www.plassonlivestock.com