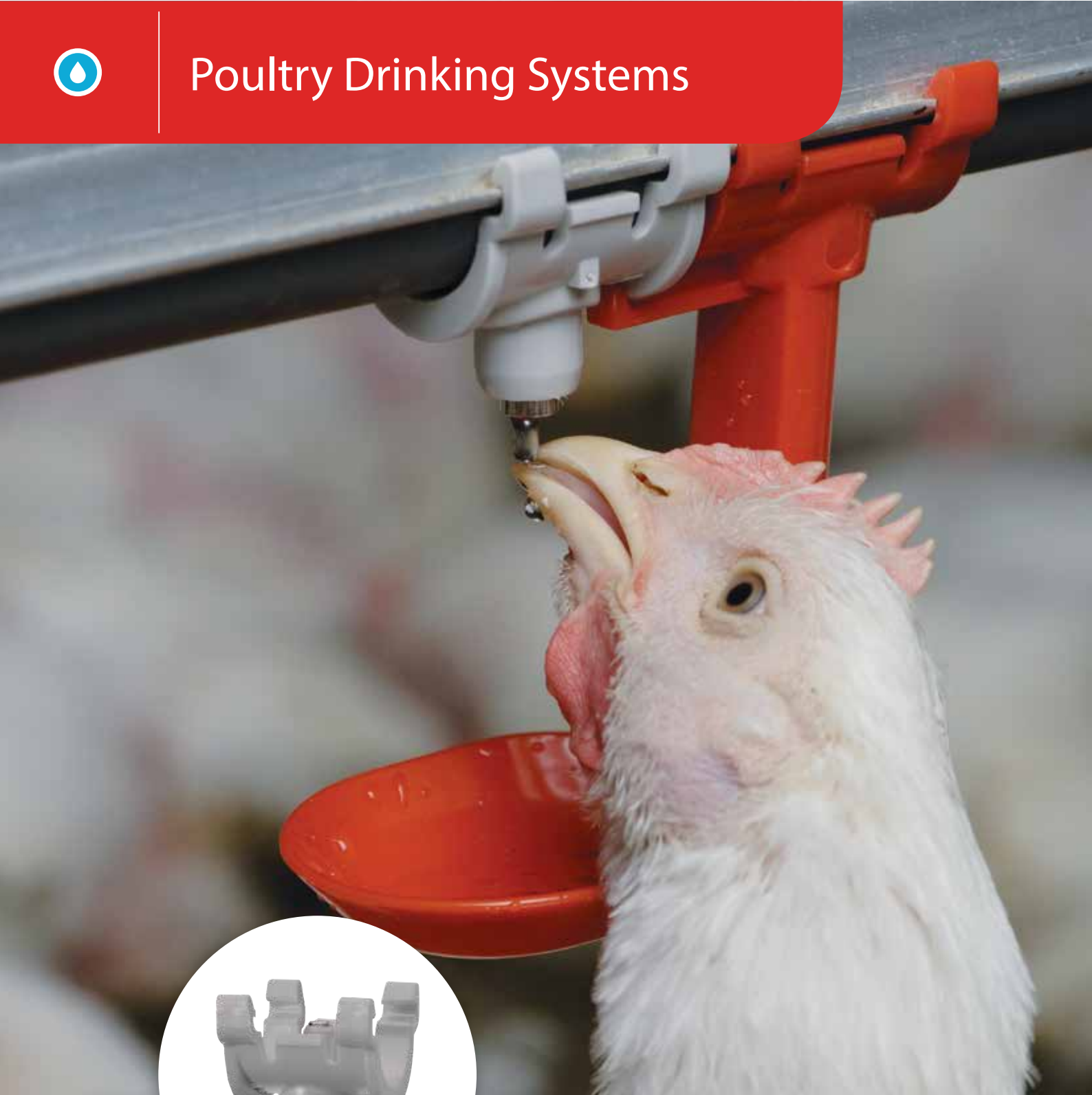




## Poultry Drinking Systems



# Nipple System

## Nipples for Broilers

Grey Nipple  
for Broiler  
02205237



Orange Nipple  
for Broiler  
02205041



Yellow Nipple  
for Broiler  
02205040



Tray for Nipple  
02205001



Super Easy Chick Start  
02205548



## Nipples for Breeders & Layers

Breeder Nipple  
Brown  
02205012



Breeder Nipple  
Dark Grey  
02205061



Breeder Tray  
02205521



## Nipples for Pullets Evolving to Breeders & Layers

Dark Blue Nipple  
for Pullets  
02205280\*



Violet Nipple  
for Pullets  
02205282\*



\* We recommend adding supplementary drinker for the first few days

## Threaded Nipples for Broilers

Threaded Nipple  
Grey  
02205364



Threaded Nipple  
Orange  
02205358



Threaded Nipple  
Yellow  
02205352



Tray for Square Pipe  
22 mm  
02205260



## Threaded Nipples for Breeders & Layers

Threaded Breeder  
Nipple  
Brown  
02205051



Threaded Breeder  
Nipple  
Dark Grey  
02205362



## Threaded Nipples for Pullets Evolving to Breeders & Layers

Threaded Nipple  
Dark Blue  
02205360



Threaded Nipple  
Violet  
02205354



Blind Nipple Black  
02205422



Snap On Plug for  
Nipple  
(with O-Ring)  
02205262



## Turkey Poults

Super Easy Start Adjustable  
(SESA) Green  
02205550



Super Easy Start  
Adjustable (SESA) Red  
02205546



## Adult Turkeys

Turkey  
Heavy Finish  
02205534



Large Turkey  
Heavy Finish  
02205842



## Ducks

Easy Duck  
02209990





# Nipple System

## Pressure Management

Water On Demand  
02205813



Water On Demand Pro  
02205388



Water On Demand Pro  
Stand Alone  
02205469



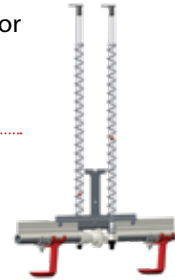
Water On Demand  
Controller  
02205377



Universal Pressure  
Regulator (UPR)  
02206500



Slope Regulator External Connector  
02205407 - 10 cm + kit  
02205671 - 15 cm + kit  
02205669 - 30 cm



Slope Regulator  
02205253 - 10 cm + kit  
02205094 - 15 cm + kit  
02205081 - 30 cm for cage cups

## Flushing Management

Auto Flushing  
Controller  
02205686



Wireless Flushing  
Regulator Unit  
02204016



Wireless Flushing  
Wall Unit  
02204017



## General Accessories

Nipple Assembly Tool  
02205420



Pliers for Dismantling  
Nipples  
02205616



Sight Tube Brush  
02205424



Chamfering Tool  
02207514



Flexible Tube 1/2"  
02209085



Silicon Grease  
for Water Systems  
Pack (50gr)  
02300152



Siliphos Softener  
1" In/Out 32mm Kit  
02205903



Siliphos Softener 1"  
02300002



Disk Filter 1"  
02209090



## Water Meters

Water Meter 1"  
W/Electric Output  
1L/H  
02209519



Water Meter 1/2"  
W/Electric Output  
1L/H  
02209520



Water Meter 1/2"  
1L/H  
02209050



# Nipple System

## Parts List

### 3mm Nylon Cord

02100082 - 20m  
 02100084 - 50m  
 02100088 - 300m  
 02100083 - 500m



### Cord Adjuster 2

02100010



### Cord Adjuster

02100018



### Black Suspension Clip

02209016

(also used as shocker wire holder when installed in pullet and breeder houses)  
 (Pullets & Breeders: 4 units)



### Aluminum Profile for External Connector - 2.94m

02205167



### Short Aluminum Profile for External Connector

02209023



### Long Aluminum Profile for External Connector

02209024



### External Connector for 25mm PVC Pipe

02205035



### Internal Connector for 25mm PVC Pipe

02205122



### Internal External Connector for 25mm PVC Pipe

02204087



### Seal for Pipe Connector

02205121



### SS 1/4" Bolts x 10mm (3/8")

02209017



### SS Bolt 1/4-17mm

02205721

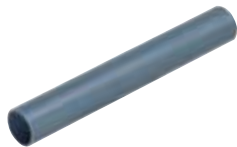


### SS Nut 1/4"

02209018



### 25mm perforated PVC Pipe - 3m



Item Code	Holes for Nipples
02205141	2
02205140	3
02205156	4
02205157	5
02205136	6
02205137	7
02205138	8
02205139	9
02205131	10
02205152	11

Item Code	Holes for Nipples
02205132	12
02205123	13
02205134	14
02205135	15
02205153	16
02205154	17
02205133	18
02205163	19
02205155	20
02205164	24

## Line Ends

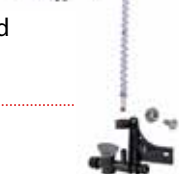
### Line End Kit Barbed 1/2" Flex Tube

02205772



### Line End Kit Barbed GHT

02205771



### Line End Kit 1/4" 1/2" Flex Tube

02205938



### Line End Kit 1/4" GHT

02205639



### Line End Kit Blind 1/2" Flex Tube

02205769



### Line End Kit Blind GHT

02205768





# Nipple System

## Suspension System

Manual Winch 1500LBS  
02205601



Electric Winch 3000LBS  
02312510



Winch Support  
Horizontal 1500/3000LBS  
02312532



Winch Support 11Deg.  
1500/3000LBS  
02312531



Manual Winch 3/5 FT  
02205602 - 3 ft  
02312002 - 5 ft



Pulley 7/8"  
02205603



Cable Clamp 1/8"  
02320001



Steel Cable 1/8"  
(3.0mm) 6x7+1Fc  
(Per meter)  
02205605



Ceiling hook  
metal house  
02312006



Screw Hook (M6x90mm)  
wooden house  
02310049



Steel Cable 3/32"  
(2.4mm)  
02320003



Cable Height  
Adjuster  
02310457



## Electrified Anti-Perch

Electric Shocker  
02205610



Steel Cable 1/8"  
(3.0mm)  
02205611



SS Bolt 1/4" - 25mm  
02205615



SS Nut 1/4"  
02209018



Aluminum Sleeve  
Clamp 1/16"  
02205612



Shocker Insulator  
02205148



Shocker Spring  
02205149



Grounding Nipple  
02205425



High Voltage Double  
Insulated Cable  
02387136



## Non-Electrified Anti-Perch

Non Electrified Anti-Perch  
Steel Suspension  
02205858



"S" Hook 4x45  
02310022



Steel Cable 1/16" (1.5mm)  
1x7 (Per meter)  
02205611



Cable Clamp 1/8"  
02320001



Anti-Perch Winch  
02310501



Anti-Perch Spring  
02310502



Anti-Perch Red  
Suspension Clip  
02209503



Self Drilling Screw  
4.8x19mm  
02382466



SS Bolt 1/4" x 11mm  
02209017






SS Nut 1/4"  
02209018






# Line Head Complete

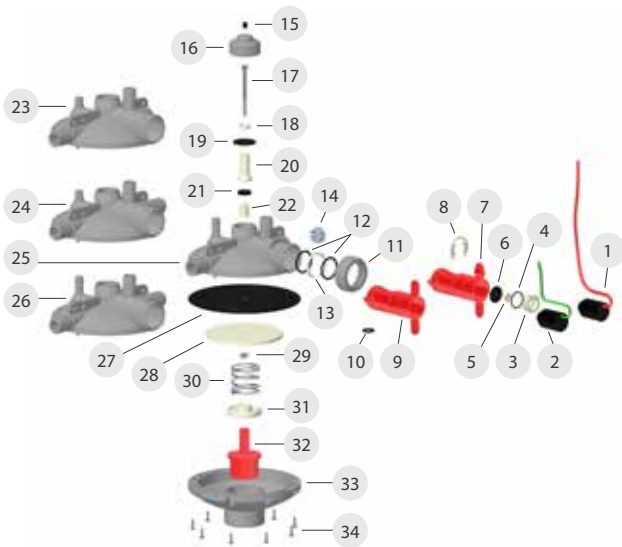
	Flushing Type	Pressure Indicator	Cat. No.	Cat. No. FKM	
<b>WOD Line Head</b> 	Wireless	60	WOD Line Head Wireless Flushing (60) MK2 Com. \ FKM	02209974	0220V9974
		80	WOD Line Head Wireless Flushing (80) MK2 Com. \ FKM	02209978	0220V9978
		Detachable	WOD Line Head Wireless Flushing Detachable Sight Tube MK2 Com. \ FKM	02209540	0220V9540
		Threaded	WOD Line Head Wireless Flush Threaded Sight Tube MK2 Com. \ FKM	02209524	0220V9524
	Auto	60	WOD Line Head W/Auto Flush (60) MK2 Com. \ FKM	02205497	0220V5497
		80	WOD Line Head W/Auto Flush (80) MK2 Com. \ FKM	02205944	0220V5944
		Detachable	WOD Line Head W/ Auto Flushing Detachable Sight Tube MK2 Com. \ FKM	02209541	0220V9541
		Threaded	WOD Line Head W/ Auto Flush Threaded Sight Tube MK2 Com. \ FKM	02209526	0220V9526
	Manual	60	WOD Line Head (60) MK2 Com. \ FKM	02205493	0220V5493
		80	WOD Line Head (80) MK2 Com. \ FKM	02205940	0220V5940
		Detachable	WOD Line Head Detachable Sight Tube MK2 Com. \ FKM	02209542	0220V9542
		Threaded	WOD Line Head Threaded Sight Tube MK2 Com. \ FKM	02209528	0220V9528
<b>Line Head</b> 	Wireless	60	Line Head Wireless Flushing (60) MK2 Com. \ FKM	02209973	0220V9973
		80	Line Head Wireless Flushing (80) MK2 Com. \ FKM	02209976	0220V9976
		Detachable	Line Head Wireless Flushing Detachable Sight Tube MK2 Com. \ FKM	02207062	0220V7062
		Threaded	Line Head Wireless Flush Thread Sight Tube MK2 Com. \ FKM	02207057	0220V7057
	Auto	60	Line Head W/Auto Flush (60) MK2 Com. \ FKM	02205495	0220V5495
		80	Line Head W/Auto Flush (80) MK2 Com. \ FKM	02205942	0220V5942
		Detachable	Line Head W/Auto Flushing Detachable Sight Tube MK2 Com. \ FKM	02207063	0220V7063
		Threaded	Line Head W/Auto Flush Thread Sight Tube MK2 Com. \ FKM	02207053	0220V7053
	Manual	60	Line Head (60) MK2 Com. \ FKM	02205491	0220V5491
		80	Line Head (80) MK2 Com. \ FKM	02205499	0220V5499
		Detachable	Line Head With Detachable Sight Tube MK2 Com. \ FKM	02207064	0220V7064
		Threaded	Line Head With Thread Sight Tube MK2 Com. \ FKM	02207049	0220V7049
<b>Line Head High Pressure</b> 	Wireless	Without	Line Head 0-250 Wireless Flushing MK2 Com. \ FKM	02207034	0220V7034
	Auto	Without	Line Head 0-250 W/Auto Flush MK2 Com. \ FKM	02207032	0220V7032
	Manual	Without	Line Head 0-250 MK2 Com. \ FKM	02207030	0220V7030



# Mid Line Complete

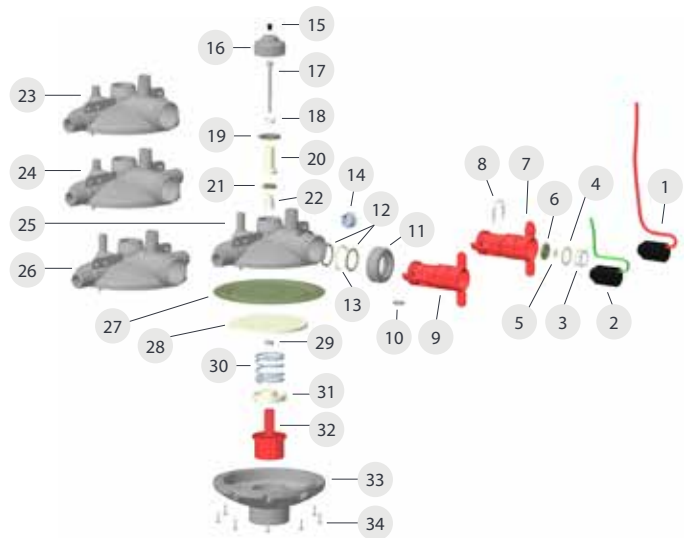
	Flushing Type	Pressure Indicator	Cat. No.	Cat. No. FKM	
<b>WOD Mid Line</b> 	Wireless	60	WOD Mid Line Wireless Flushing (60) MK2 Com. \ FKM	02209975	0220V9975
		80	WOD Mid Line Wireless Flushing (80) MK2 Com. \ FKM	02209979	0220V9979
		Detachable	WOD Mid Line Wireless Flushing Detachable Sight Tube MK2 Com. \ FKM	02209543	0220V9543
		Threaded	WOD Mid Line Wireless Flush Threaded Sight Tube MK2 Com. \ FKM	02209530	0220V9530
	Auto	60	WOD Mid Line W/Auto Flush (60) MK2 Com. \ FKM	02205498	0220V5498
		80	WOD Mid Line W/Auto Flush (80) MK2 Com. \ FKM	02205945	0220V5945
		Detachable	WOD Mid Line W/ Auto Flushing Detachable Sight Tube MK2 Com. \ FKM	02209544	0220V9544
		Threaded	WOD Mid Line W/ Auto Flush Threaded Sight Tube MK2 Com. \ FKM	02209532	0220V9532
	Manual	60	WOD Mid Line (60) MK2 Com. \ FKM	02205494	0220V5494
		80	WOD Mid Line (80) MK2 Com. \ FKM	02205941	0220V5941
		Detachable	WOD Mid Line Detachable Sight Tube MK2 Com. \ FKM	02209545	0220V9545
		Threaded	WOD Mid Line Threaded Sight Tube MK2 Com. \ FKM	02209534	0220V9534
<b>Mid Line</b> 	Wireless	60	Mid Line Wireless Flushing (60) MK2 Com. \ FKM	02209982	0220V9982
		80	Mid Line Wireless Flushing (80) MK2 Com. \ FKM	02209977	0220V9977
		Detachable	Mid Line Wireless Flushing Detachable Sight Tube MK2 Com. \ FKM	02207065	0220V7065
		Threaded	Mid Line Wireless Flush Thread Sight Tube MK2 Com. \ FKM	02207058	0220V7058
	Auto	60	Mid Line W/Auto Flush (60) MK2 Com. \ FKM	02205496	0220V5496
		80	Mid Line W/Auto Flush (80) MK2 Com. \ FKM	02205943	0220V5943
		Detachable	Mid Line W/Auto Flushing Detachable Sight Tube MK2 Com. \ FKM	02207066	0220V7066
		Threaded	Mid Line W/Auto Flush Thread Sight Tube MK2 Com. \ FKM	02207054	0220V7054
	Manual	60	Mid Line (60) MK2 Com. \ FKM	02205492	0220V5492
		80	Mid Line (80) MK2 Com. \ FKM	02205939	0220V5939
		Detachable	Mid Line With Detachable Sight Tube MK2 Com. \ FKM	02207067	0220V7067
		Threaded	Mid Line With Thread Sight Tube MK2 Com. \ FKM	02207050	0220V7050
<b>Mid Line High Pressure</b> 	Wireless	Without	Mid Line 0-250 Wireless Flushing MK2 Com. \ FKM	02207035	0220V7035
	Auto	Without	Mid Line 0-250 W/Auto Flush MK2 Com. \ FKM	02207033	0220V7033
	Manual	Without	Mid Line 0-250 MK2 Com. \ FKM	02207031	0220V7031

## Pressure Regulator Bom



No	Cat No.	Description
1	02205477	Electric Coil for Auto Flushing MK2
2	02206745	Solenoid Latch 12 Ohm for Flush Control
3	02205894	Electric Coil Holder MK2
4	02205478	O-Ring 21.95X1.78 Electric Holder MK2 P629
5	02205896	Diaphragm Holder MK2
6	02205897	Auto Flush Diaphragm MK2
7	02205892	Auto Flush Valve Body MK2
8	02205895	U Clamp Holder MK2
9	02205893	Manual Valve Body MK2
10	07002D016P	O-ring EPDM 16
11	02205899	Flush Valve Nut MK2
12	02205866	Peripheral O-Ring 3X30 for Auto Flush MK2
13	02205898	Split Ring for Auto Flush MK2
14	02205680	Grey Cap Plug for Pressure Valve
15	02205732	Pressure Regulator Cap Plug
16	02205709	Cap for Pressure Regulator
17	02205714	M6 Bolt for Pressure Reg.valve
18	02205708	Washer for Small Diaphragm-Press. Regulator
19	02205716	Small Diaphragm for Valve P-502
20	02205706	Upper Spool for Pressure Regulator
21	02205717	Seal for Press . Regulator Valve P-503
22	02205707	Lower Spool for Pressure Regulator
23	02205889	Top Shell Threaded Outlet MK2
24	02205890	Top Shell Mid Line Threaded Outlet MK2
25	02205887	Top Shell Line Head MK2
26	02205888	Top Shell Mid Line MK2
27	02205715	Large Diaphragm for Valve P-501
28	02205705	Backing Plate for Diaphragm-Press. Regulator
29	16007006	SS A2 Hex Nut M6 Iso 4032 Coated with Wax
30	02205713	Spring for Pressure Regulator
31	02205704	Nut for Pressure Regulator
32	02205703	Ball Handle for Pressure Regulator
33	02205702	Bottom Shell - Pressure Regulator
34	02205720	Screw for Pressure Regulator 4X14

## FKM Pressure Regulator Bom

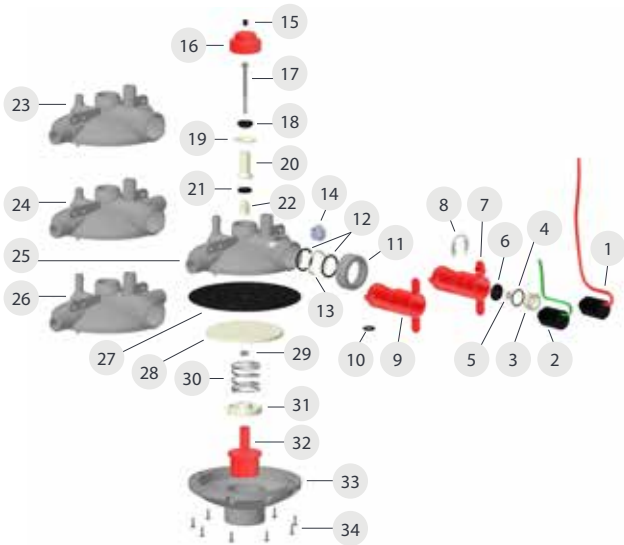


No	Cat No.	Description
1	02205477	Electric Coil for Auto Flushing MK2
2	02206745	Solenoid Latch 12 Ohm for Flush Control
3	02205894	Electric Coil Holder MK2
4	0220V5478	O-Ring 21.95X1.78 Electric Holder MK2 (FKM)
5	02205896	Diaphragm Holder MK2
6	0220V5897	Auto Flush Diaphragm (FKM) MK2
7	02205892	Auto Flush Valve Body MK2
8	02205895	U Clamp Holder MK2
9	02205893	Manual Valve Body MK2
10	0220V9539	Central O-Ring 3x15 For Auto Flush (FKM) MK2
11	02205899	Flush Valve Nut MK2
12	0220V5866	Peripheral O-Ring 3X30 for Auto Flush (FKM) MK2
13	02205898	Split Ring for Auto Flush MK2
14	02205680	Grey Cap Plug for Pressure Valve
15	02205732	Pressure Regulator Cap Plug
16	02205709	Cap for Pressure Regulator
17	02205714	M6 Bolt for Pressure Reg.valve
18	02205708	Washer for Small Diaphragm-Press. Regulator
19	0220V5716	Small Diaphragm for Valve (FKM)
20	02205706	Upper Spool for Pressure Regulator
21	0220V5717	Seal For Press . Regulator Valve (FKM)
22	02205707	Lower Spool for Pressure Regulator
23	02205889	Top Shell Threaded Outlet MK2
24	02205890	Top Shell Mid Line Threaded Outlet MK2
25	02205887	Top Shell Line Head MK2
26	02205888	Top Shell Mid Line MK2
27	0220V5715	Large Diaphragm for Valve (FKM)
28	02205705	Backing Plate for Diaphragm-Press. Regulator
29	16007006	SS A2 Hex Nut M6 Iso 4032 Coated with Wax
30	02205713	Spring for Pressure Regulator
31	02205704	Nut for Pressure Regulator
32	02205703	Ball Handle for Pressure Regulator
33	02205702	Bottom Shell - Pressure Regulator
34	02205720	Screw for Pressure Regulator 4X14



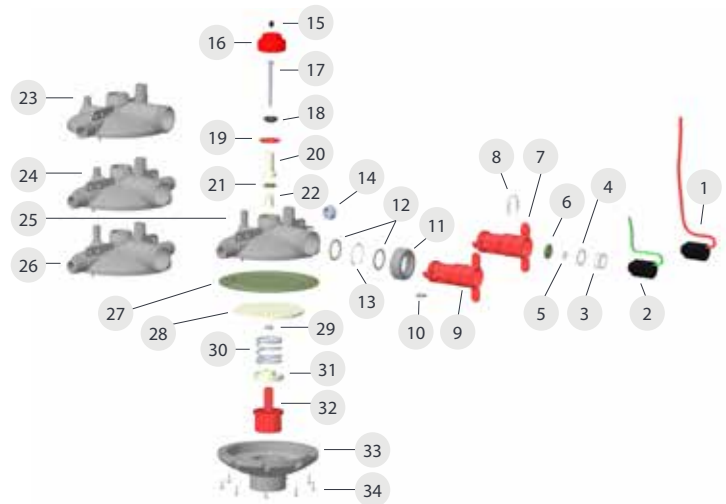


# WOD Bom



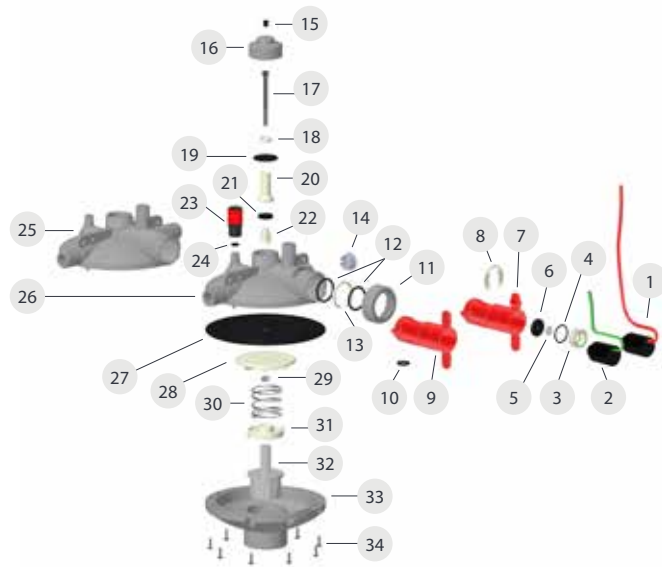
No	Cat No.	Description
1	02205477	Electric Coil for Auto Flushing MK2
2	02206745	Solenoid Latch 12 Ohm for Flush Control
3	02205894	Electric Coil Holder MK2
4	02205478	O-Ring 21.95X1.78 Electric Holder MK2 P629
5	02205896	Diaphragm Holder MK2
6	02205897	Auto Flush Diaphragm MK2
7	02205892	Auto Flush Valve Body MK2
8	02205895	U Clamp Holder MK2
9	02205893	Manual Valve Body MK2
10	07002D016P	O-ring EPDM 16
11	02205899	Flush Valve Nut MK2
12	02205866	Peripheral O-Ring 3X30 for Auto Flush MK2
13	02205898	Split Ring for Auto Flush MK2
14	02205680	Grey Cap Plug for Pressure Valve
15	02205732	Pressure Regulator Cap Plug
16	02205873	Proportional Reducer Cap Red
17	02205714	M6 Bolt for Pressure Reg.valve
18	02205874	Proportional Reducer Washer
19	02205662	Small Diaphragm for WOD Reducer
20	02205706	Upper Spool for Pressure Regulator
21	02205717	Seal for Press . Regulator Valve P-503
22	02205707	Lower Spool for Pressure Regulator
23	02205889	Top Shell Threaded Outlet MK2
24	02205890	Top Shell Mid Line Threaded Outlet MK2
25	02205887	Top Shell Line Head MK2
26	02205888	Top Shell Mid Line MK2
27	02205715	Large Diaphragm for Valve P-501
28	02205705	Backing Plate for Diaphragm-Press. Regulator
29	16007006	SS A2 Hex Nut M6 Iso 4032 Coated with Wax
30	02205713	Spring for Pressure Regulator
31	02205704	Nut for Pressure Regulator
32	02205703	Ball Handle for Pressure Regulator
33	02205702	Bottom Shell - Pressure Regulator
34	02205720	Screw for Pressure Regulator 4X14

# FKM WOD Bom



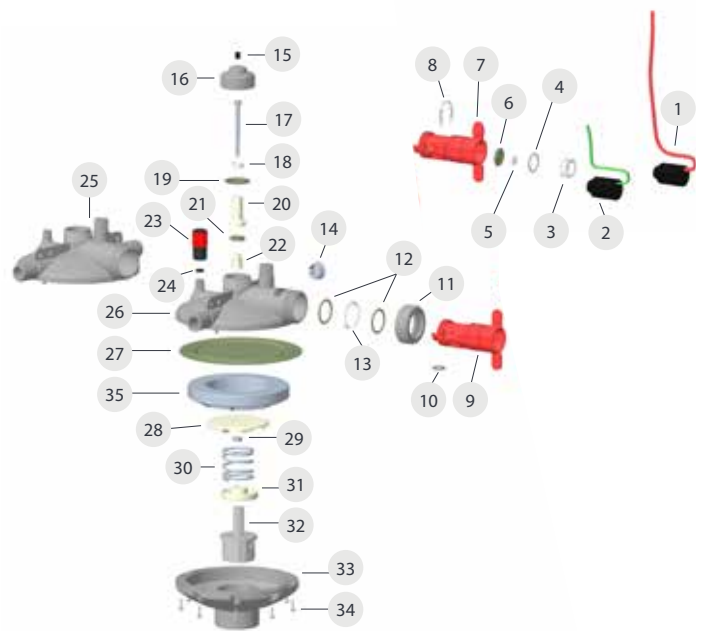
No	Cat No.	Description
1	02205477	Electric Coil for Auto Flushing MK2
2	02206745	Solenoid Latch 12 Ohm for Flush Control
3	02205894	Electric Coil Holder MK2
4	0220V5478	O-Ring 21.95X1.78 Electric Holder MK2 (FKM)
5	02205896	Diaphragm Holder MK2
6	0220V5897	Auto Flush Diaphragm MK2 (FKM)
7	02205892	Auto Flush Valve Body MK2
8	02205895	U Clamp Holder MK2
9	02205893	Manual Valve Body MK2
10	0220V9539	Central O-Ring 3x15 For Auto Flush (FKM) MK2
11	02205899	Flush Valve Nut MK2
12	0220V5866	Peripheral O-Ring 3X30 for Auto Flush (FKM) MK2
13	02205898	Split Ring for Auto Flush MK2
14	02205680	Grey Cap Plug for Pressure Valve
15	02205732	Pressure Regulator Cap Plug
16	02205873	Proportional Reducer Cap Red
17	02205714	M6 Bolt for Pressure Reg.valve
18	02205874	Proportional Reducer Washer
19	0220V5662	Small Diaphragm for WOD Reducer (FKM)
20	02205706	Upper Spool for Pressure Regulator
21	0220V5717	Seal for Press . Regulator Valve (FKM)
22	02205707	Lower Spool for Pressure Regulator
23	02205889	Top Shell Threaded Outlet MK2
24	02205890	Top Shell Mid Line Threaded Outlet MK2
25	02205887	Top Shell Line Head MK2
26	02205888	Top Shell Mid Line MK2
27	0220V5715	Large Diaphragm for Valve (FKM)
28	02205705	Backing Plate for Diaphragm-Press. Regulator
29	16007006	SS A2 Hex Nut M6 Iso 4032 Coated with Wax
30	02205713	Spring for Pressure Regulator
31	02205704	Nut for Pressure Regulator
32	02205703	Ball Handle for Pressure Regulator
33	02205702	Bottom Shell - Pressure Regulator
34	02205720	Screw for Pressure Regulator 4X14

## High-Pressure Regulator BOM



No	Cat No.	Description
1	02205477	Electric Coil for Auto Flushing MK2
2	02206745	Solenoid Latch 12 Ohm for Flush Control
3	02205894	Electric Coil Holder MK2
4	02205478	O-Ring 21.95X1.78 Electric Holder MK2 P629
5	02205896	Diaphragm Holder MK2
6	02205897	Auto Flush Diaphragm MK2
7	02205892	Auto Flush Valve Body MK2
8	02205895	U Clamp Holder MK2
9	02205893	Manual Valve Body MK2
10	07002D016P	O-ring Epdm 16
11	02205899	Flush Valve Nut MK2
12	02205866	Peripheral O-Ring 3X30 for Auto Flush MK2
13	02205898	Split Ring for Auto Flush MK2
14	02205680	Grey Cap Plug for Pressure Valve
15	02205732	Pressure Regulator Cap Plug
16	02205709	Cap for Pressure Regulator
17	02205714	M6 Bolt for Pressure Reg.valve
18	02205708	Washer for Small Diaphragm-Press. Regulator
19	02205716	Small Diaphragm for Valve P-502
20	02205706	Upper Spool for Pressure Regulator
21	02205717	Seal for Press . Regulator Valve P-503
22	02205707	Lower Spool for Pressure Regulator
23	02209168	Quick Release Socket Female 1/4 Epdm
24	02100051	O-Ring 50 for Shutoff P50
25	02205890	Top Shell Mid Line Threaded Outlet MK2
26	02205889	Top Shell Threaded Outlet MK2
27	02205715	Large Diaphragm for Valve P-501
28	02205004	Pressure Regulator 0-250 MBAR Backing Plate- Grooved
29	16007006	SS A2 Hex Nut M6 Iso 4032 Coated with Wax
30	02205713	Spring for Pressure Regulator
31	02205704	Nut for Pressure Regulator
32	02205351	Ball Handle for Pressure Regulator 0-250
33	02205702	Bottom Shell - Pressure Regulator
34	02205720	Screw for Pressure Regulator 4X14

## FKM High-Pressure Regulator BOM



No	Cat No.	Description
1	02205477	Electric Coil for Auto Flushing MK2
2	02206745	Solenoid Latch 12 Ohm for Flush Control
3	02205894	Electric Coil Holder MK2
4	0220V5478	O-Ring 21.95X1.78 Electric Holder MK2 (FKM)
5	02205896	Diaphragm Holder MK2
6	0220V5897	Auto Flush Diaphragm MK2
7	02205892	Auto Flush Valve Body MK2
8	02205895	U Clamp Holder MK2
9	02205893	Manual Valve Body MK2
10	0220V9539	Central O-Ring 3x15 For Auto Flush (FKM) MK2
11	02205899	Flush Valve Nut MK2
12	0220V5866	Peripheral O-Ring 3X30 for Auto Flush (FKM) MK2
13	02205898	Split Ring for Auto Flush MK2
14	02205680	Grey Cap Plug for Pressure Valve
15	02205732	Pressure Regulator Cap Plug
16	02205709	Cap for Pressure Regulator
17	02205714	M6 Bolt for Pressure Reg.valve
18	02205708	Washer for Small Diaphragm-Press. Regulator
19	0220V5716	Small Diaphragm for Valve (FKM)
20	02205706	Upper Spool for Pressure Regulator
21	0220V5717	Seal for Press . Regulator Valve (FKM)
22	02205707	Lower Spool for Pressure Regulator
23	02209168	Quick Release Socket Female 1/4 Epdm
24	02100051	O-Ring 50 for Shutoff P50
25	02205890	Top Shell Mid Line Threaded Outlet MK2
26	02205889	Top Shell Threaded Outlet MK2
27	0220V5715	Large Diaphragm for Valve (FKM)
28	02205004	Pressure Regulator 0-250 MBAR Backing Plate- Grooved
29	16007006	SS A2 Hex Nut M6 Iso 4032 Coated with Wax
30	02205713	Spring for Pressure Regulator
31	02205704	Nut for Pressure Regulator
32	02205351	Ball Handle for Pressure Regulator 0-250
33	02205702	Bottom Shell - Pressure Regulator
34	02205720	Screw for Pressure Regulator 4X14
35	02205005	Pressure Regulator 0-250 MBAR Diaphragm Support




# MK2 Accessories

					<p><b>02205756</b> Pressure Gauge 0-1.0 Bar W/Glycerin</p>	<p><b>02205757</b> Pressure Gauge 0-4.0 Bar W/Glycerin</p>	<p><b>02205758</b> Pressure Gauge 0-0.6 Bar W/Glycerin</p>	<p><b>02205767</b> Pressure Gauge Bar/cm W/Glycerin for WOD</p>	
<p><b>02204082</b> Pressure Indicator Double Sealing 60 Com.</p>	<p><b>02204083</b> Pressure Indicator Double Sealing 80 Com.</p>	<p><b>02204084</b> Detachable Pressure Indicator 60 Set</p>	<p><b>02204085</b> Pressure Indicator 60 For Cages Set</p>	<p><b>02204087</b> Internal External Connector for 25mm Pipe Com.</p>	<p><b>02311547</b> Electric Cable Protection Spring</p>	<p><b>02209999</b> Double Sealing Plug Press. Ind. with Nipple</p>	<p><b>02205965</b> Water Temperature Sensor for Flushing System Com.</p>	<p><b>02205447</b> Needle for Pressure Gauge</p>	<p><b>02205221</b> Detachable Pressure Gauge</p>
<p><b>02205481</b> Pressure Regulator Accessories Head Line MK2 Set</p>	<p><b>02205482</b> Pressure Regulator Accessories Mid Line MK2 Set</p>	<p><b>02205990</b> Pressure Regulator Accessories Cages Head Line MK2 Set</p>							
<p>03013055</p> <p>02209132</p>	<p>03013055</p> <p>02209132</p>	<p>03013055</p> <p>02209985</p>							
<p>02209083</p>	<p>02209083</p>	<p><b>02205946</b> Pressure Regulator Accessories Cages Mid Line MK2 Set</p>							
<p>02205721 x3 02209018 x3</p>	<p>02205721 x6 02209018 x6</p>	<p>03013055</p>							
<p>02205035</p>	<p>02205035 x2</p>	<p>02209985</p>	<p><b>02209985</b> Pressure Reg MK2 Adaptor to Flex Pipe 3/4" W/ Bolts &amp; Nuts Com.</p>	<p><b>02209986</b> Pressure Reg MK2 Mid Line Plug Adaptor W/ Bolts &amp; Nut Com.</p>	<p><b>07960040</b> PTFE Tape (Teflon) 1/2"</p>	<p><b>*02204016</b> Flush Control Regulator Unit Set</p>	<p><b>*02204017</b> Flush Control Wall Unit Set</p>	<p><b>02205479</b> SS Connector for Line Head Pressure Regulator MK2</p>	

\* 2 X AA Batteries Are Required (Not Included)

# Broiler Drinker

<p><b>Clip</b> 02100044</p>		<p>* Recommended number of drinkers per 1,000 birds: 8-10.</p>
<p><b>20m Nylon Cord (2m per Drinker)</b> 02100082</p>		<p>* Circumference of outer lip 106 cm. (42 1/2").</p>
<p><b>Cord Adjuster</b> 02100010</p>		
<p><b>Handle Hook</b> 02140018</p>		
<p><b>Water Level Adjuster</b> 02140009</p>		<p><b>Inline Shut-Off (Optional)</b> 02208025</p>
<p><b>Mechanism Top</b> 02140012</p>		<p><b>30m Flexible Tube</b> (3m per Drinker) <b>5.7mm I.D.</b> (9.0mm O.D.) 02100077</p>
<p><b>Mechanism Lock Collar</b> 02140011</p>		
<p><b>Stainless Steel Spring</b> 02140016</p>		<p><b>Union 1/4"</b> 2 Units 02100039</p>
<p><b>Washer</b> 02140017</p>		
<p><b>Washer Support</b> 02140015</p>		
<p><b>Mechanism Body</b> 02140013</p>		
<p><b>Down Spout</b> 02140014</p>		
<p><b>Bell</b> 02140004</p>		
<p><b>Hanger Rod</b> 02140007</p>		
<p><b>Hanger Ballast Nut</b> 02140008</p>		
<p><b>Ballast Bottle</b> 02140003</p>		



**Broiler Drinker Complete**  
02140450  
20 units per carton



# Compact Breeder Drinker

# Breeder Drinker

**Clip**  
02100044

**20m Nylon Cord**  
(2m per Drinker)  
02100082

\* Recommended number of compact drinkers per 1,000 adult birds: 10-12.  
\* Circumference of outer lip 112 cm. (44.1").

**Cord Adjuster**  
02100010

**Handle Hook**  
02140018

**Water Level Adjuster**  
02140009

**Mechanism Top**  
02140012

**Mechanism Lock Collar**  
02140011

**Stainless Steel Spring**  
02106039

**Washer**  
02140017

**Washer Support**  
02140015

**Mechanism Body**  
02140013

**Down Spout**  
02140014

**Bell**  
02106034

**Hanger Rod**  
02140007

**Hanger Ballast Nut**  
02140008

**Ballast Bottle**  
02106033



**Inline Shut-Off**  
(Optional)  
02208025

**30m Flexible Tube**  
(3m per Drinker)  
5.7mm I.D.  
(9.0mm O.D.)  
02100077

**Union 1/4"**  
2 Units  
02100039

**Compact Breeder Drinker Complete**  
02106000  
10 units per carton

**Clip**  
02100044

**20m Nylon Cord**  
(2m per Drinker)  
02100082

\* Recommended number of drinkers per 1,000 adult birds: 10-12.  
\* Circumference of outer lip 110 cm. (44").

**Cord Adjuster**  
02100010

**Union 1/4"**  
(2 Units)  
02100039

**Mechanism Cap**  
02102035

**O-Ring**  
02102038

**Filter Element**  
02100056

**Mechanism Pipe**  
02102036

**Lock-nut**  
02100015

**Water Level Adjuster**  
02100017

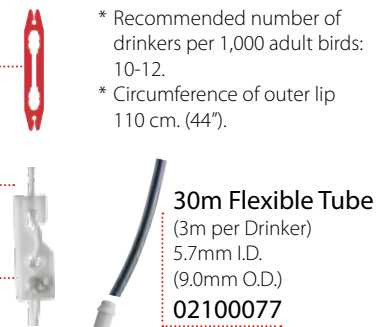
**Mechanism Spring**  
02102037

**Valve Assembly Complete**  
02100012

**Bell**  
02102034

**Bottle Hanger**  
02102041

**Ballast Bottle**  
02102033



**30m Flexible Tube**  
(3m per Drinker)  
5.7mm I.D.  
(9.0mm O.D.)  
02100077

**Mechanism Complete**  
02102051

**Breeder Drinker Complete**  
02103250  
10 units per carton

**Valve Spring**  
02100013

**Plunger**  
02100007

**Washer**  
02100054

**O-Ring**  
02100021

**Valve Housing**  
02100016





# Compact Turkey Drinker

**Clip**  
02100044

**20m Nylon Cord**  
(2m per Drinker)  
02100082

**Cord Adjuster**  
02100010

**Handle Hook**  
02140018

**Water Level Adjuster**  
02140009

**Mechanism Top**  
02140012

**Mechanism Lock Collar**  
02140011

**Stainless Steel Spring**  
02104039

**Washer**  
02140017

**Washer Support**  
02140015

**Mechanism Body**  
02140013

**Down Spout**  
02140014

**Bell**  
02104033

**Hanger Rod**  
02104038

**Hanger Ballast Nut**  
02140008

**Ballast Bottle**  
02140003

\* Recommended number of Compact Drinkers per 1,000 adult turkeys: 10-12 (12-14 per 1,000 in a warm climate).  
\* Circumference of outer lip 140 cm. (553/4").

**Inline Shut-Off (Optional)**  
02208025

**30m Flexible Tube**  
(3m per Drinker)  
5.7mm I.D.  
(9.0mm O.D.)  
02100077

**Union 1/4"**  
2 Units  
02100039

**Compact Turkey Drinker Complete**  
02104005  
10 units per carton

# Turkey Drinker

**Clip**  
02100044

**20m Nylon Cord**  
(2m per Drinker)  
02100082

**Cord Adjuster**  
02100010

**Union 1/4"**  
(2 Units)  
02100039

**Mechanism Cap**  
02102035

**O-Ring**  
02102038

**Filter Element**  
02100056

**Mechanism Pipe**  
02102036

**Lock-nut**  
02100015

**Water Level Adjuster**  
02100017

**Mechanism Spring**  
02104037

**Valve Assembly Complete**  
02100012

**Bell**  
02104032

**Bottle Hanger**  
02102041

**Ballast Bottle**  
02102033  
Not included in 02104350

\* Recommended number of Compact Drinkers per 1,000 adult turkeys: 10-12 (12-14 per 1,000 in a warm climate).  
\* Circumference of outer lip 140 cm. (553/4").

**30m Flexible Tube**  
(3m per Drinker)  
5.7mm I.D.  
(9.0mm O.D.)  
02100077

**Mechanism Complete**  
02104051

**Turkey Drinker Complete**  
(Ballast Bottle not included)  
02104350  
10 units per carton

**Valve Spring**  
02100013

**Plunger**  
02100007

**Washer**  
02100054

**O-Ring**  
02100021

**Valve Housing**  
02100016



## Cage Cups

### Screw-In type 02206001



 Valve Assembly Complete 02206017	 Cup 02206011	 Water Inlet for Screw-In Type 02206005
--	--	--

### Snap-On type 02206040



 Valve Assembly Complete 02206017	 Cup 02206011	 Water Inlet Clamp 02206006
--	--	--





### Saddle type 02206000



 Valve Assembly Complete 02206017	 Cup with Plate Clamp 02206012	 Plate clamp 02206013	 Water Inlet for Saddle Type 02206004
--	---	--	--






### Cage Starter type 02206050



 Valve Assembly Complete 02206017	 Cage Starter Cup 02206053	 Cage Starter Bracket 02206052	 Ball 7/8" 02206073	 Strap 02206054
--	---	---	--	---

### Valve Assembly Complete 02206017










 Trigger 02206002	 Spring 02206010	 Valve housing 02206003	 Valve O-ring 02206009	 Trigger seal 02206007
--	---	--	---	---

## Cage Cups Accessories

 Manure shield 02206057	 Saddle for Screw in Cup 02206025 - 20mm	 Assembly tool for cage cup valve housing 02209082
--	---	---

## Optional Accessories

 Saddle Connector 02100030
 Saddle Connector With Shut Off 02100050
 Pin Saddle 02207016 - 16mm 02207020 - 20mm 02207025 - 25mm 02207077 - 3/4"
 In-Line Shut Off 02208025
 Reducer 1/2"-1/4" (M/M) 02100031
 Reducer 1/2"-1/4" (F/M) 02100058
 Nipple 1/4"-1/4" (M/M) 02100026
 Tee 1/4"-1/4"-1/4" (M/F/M) 02100057
 Saddle for Threaded Nipple 02205249 - 25mm 02205247 - 3/4"

## Poultry Drinking Systems



Feeding



Drinking



Climate



Housing

Maagan Michael, D.N. Menashe, 3780500, Israel • Tel: +972-73-2413001 • Fax: +972-73-2333711 • [info@plassonlivestock.com](mailto:info@plassonlivestock.com)

[www.plassonlivestock.com](http://www.plassonlivestock.com)