



PLASSFENCE – Migration Fence



Worldwide
patents and
designs pending.
Registered
international
design no.
DM/210038.



Plasson's Migration Fence is the most efficient and practical way to physically define areas in the chicken house.

Using Plasson's extensive knowledge in plastic injection technology and our long experience with livestock equipment, we present an unrivaled solution in terms of quality, installation and flexibility.

Advantages:

- Top quality plastic properties to ensure longevity.
- Installation flexibility.
- Ideal for the Brooding stage or other separation required.
- Modular system which allows any separation shape and length required.
- Easy to clean and sanitize.
- Light weight and easy to handle.
- Fences can be suspended to enable the ongoing tasks during and in-between cycles.
- Specially designed connectors create the required gaps for feeding and drinking lines.



Click for video

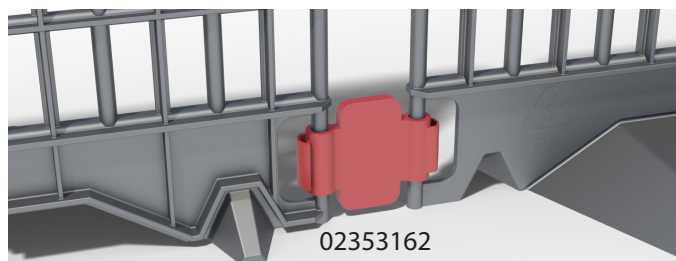


System BOM:

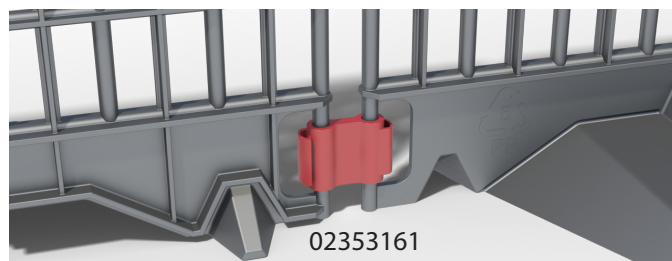
Item	Description	Qty
* 02353163	Plastic Migration Fence 60x40 cm + 2 short connectors	1 fence + 2 short connectors
02353161	Short connector - Migration Fence	1
02353162	Long connector - Migration Fence	1

* 16 Migration Fence units + 32 short connectors

Configurations:

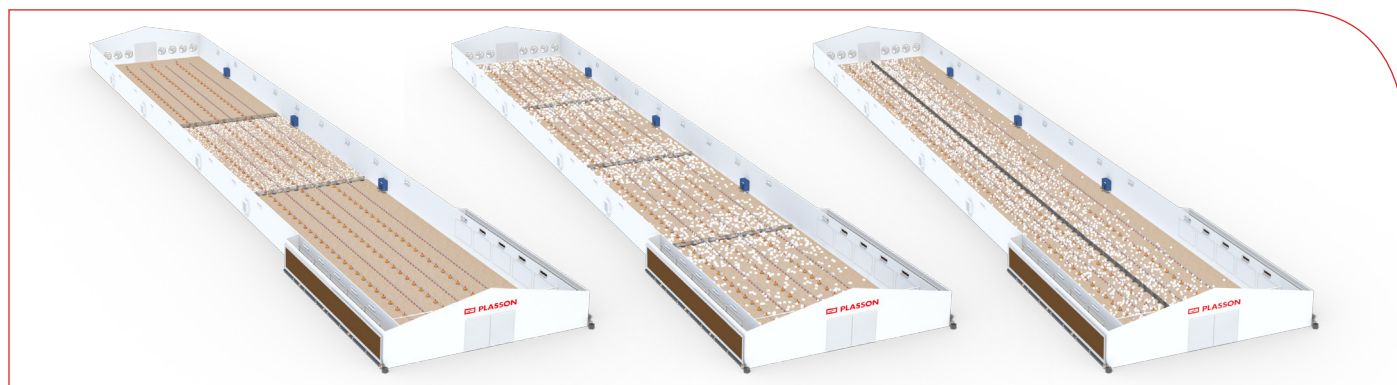


Long connector to enable feeding & drinking lines passages

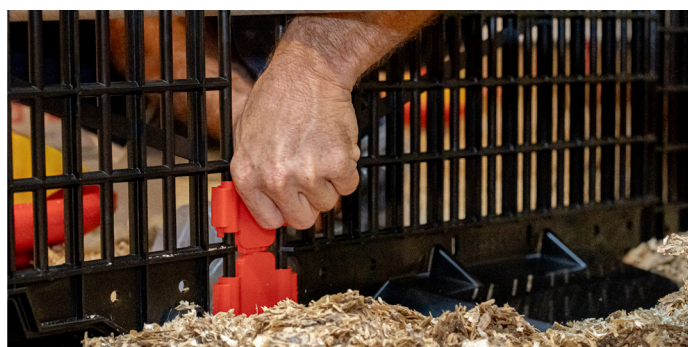
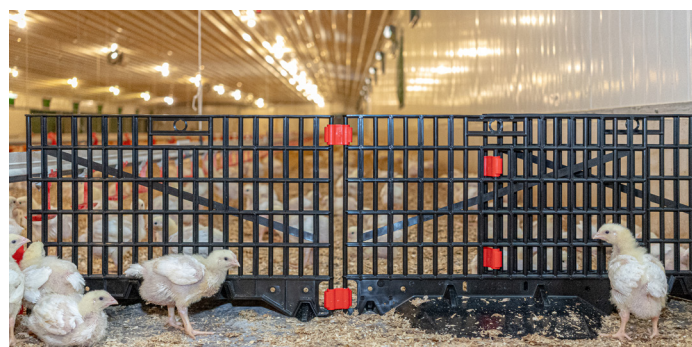


Short connector for connecting two units

Layout options



Easy modular storage saves space at the end of use



PLASSON
Livestock



Feeding



Drinking



Climate



Housing

Maagan Michael, D.N. Menashe, 3780500, Israel | Tel: +972-73-2413001, Fax: +972-73-2333711
info@plassonlivestock.com | www.plassonlivestock.com